

Base Station for sttID Bluetooth Devices

SBS-1000 / SBS-2000



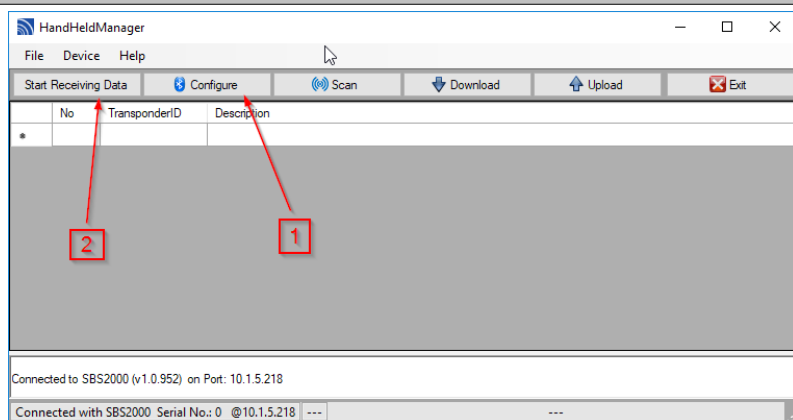
- Base Station for use with sttID Bluetooth devices
- USB Keyboard emulation possible
- USB CDC (serial) mode
- Ethernet forwarding (SBS-2000)
- 2 digital Inputs / 2 digital Outputs

With the sttID Base Station handhelds can be connected to a PC without any trouble of configuring Bluetooth at the PC. Even in power down mode and Bluetooth is off the PC sees a

valid connection, because the base station handles connection and reconnection to the handheld. So e.g. the serial port still exists.

With the SBS-2000 the handheld also can be connected to network without the use of a PC. The application can reach the handheld from everywhere over network.

Software Tools



HandHeldManager can be used to setup hand held and base station.

Technical Data SBS-1000:

Dimensions: (l x w x h)	(100 x 66 x 25) mm
Power supply:	USB
Current consumption:	full operation 400 mA
Interface:	USB 2.0
Housing:	Plastic / IP20
Operating temperature:	-10° to +50 °C

Base Station for sttID Bluetooth Devices SBS-1000 / SBS-2000

Technical Data SBS-2000:

Dimensions: (l x w x h)	(185 x 131 x 38) mm
Power supply:	12V – 24V DC, 1A
Current consumption:	full operation 500 mA
Interface:	RS232 / USB 2.0 / Ethernet
Housing:	Alu / IP20
Operating temperature:	-10° to +50 °C

Order Information:

SBS-1000	Order-No.:	200.1100
SBS-2000	Order-No.:	200.2000

Accessories:

12 V Power Supply 1.0A EU	Order-No.:	999.1280
---------------------------	------------	----------