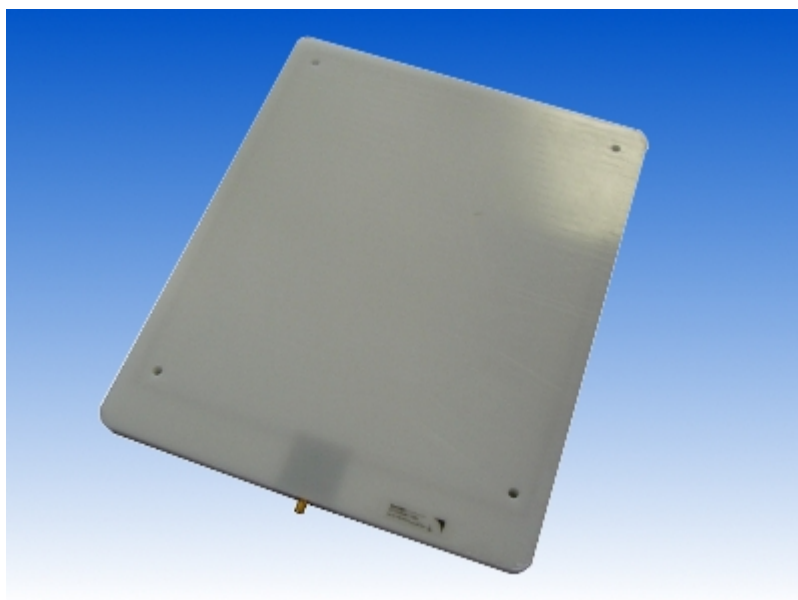


13.56 MHz antennas white acryl board

SAT-A25/30-MR-P-13MHz



Technical Data:

| Type: | Info: | Size: |
|-----------------------|---|---------------------|
| SAT-A25/30-MR-P-13MHz | acryl glass antenna with SMA-connector (max. HF-Power 2W) on request: 3mm custom specific colored cover | (250 x 300 x 12) mm |
| CABLE-HF-1.5m-SMA-SMA | 1.5m SMA-SMA cable | (1500 x 3) mm |

Order Information:

| | |
|--|---------------------|
| SAT-A25/30-MR-P-13MHz | Order-No.: 400.2025 |
| CABLE-HF-1.5m-SMA-SMA | Order-No.: 999.0653 |
| CABLE-ADAPTER-BNC (for connection with SIR-2720) | Order-No.: 999.0146 |